

Flexible adaptation to individual needs



Integration of AI segmentation models



Interactive segmentation tools



Choose from a comprehensive feature set



User management with worklist and review

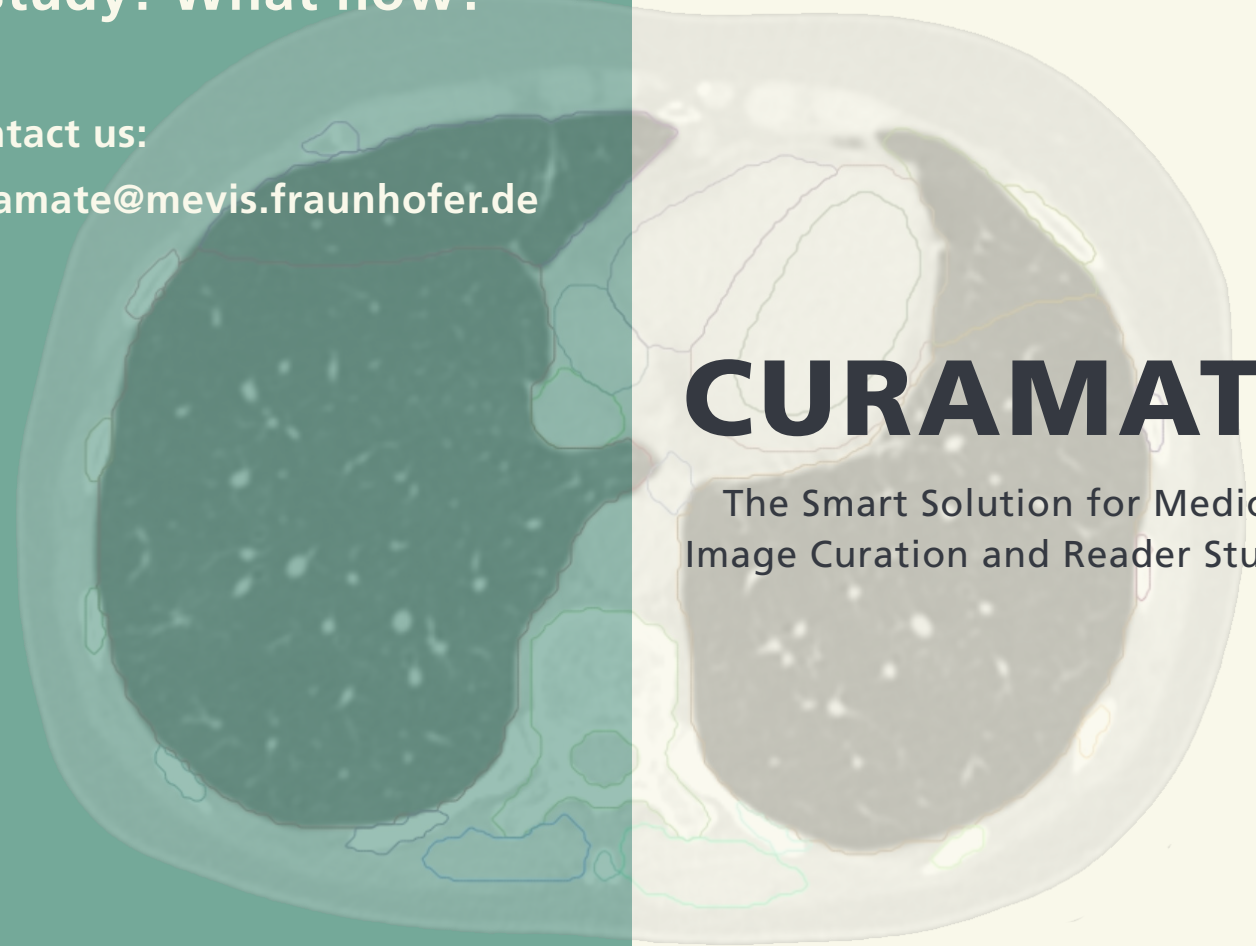


Expandable through custom coding

I want to curate medical images or run a study! What now?

Contact us:

curamate@mevis.fraunhofer.de



CURAMATE

The Smart Solution for Medical Image Curation and Reader Studies

Workflow: **Reading**

Finish Reading

Segmentation

Segment structures using Total Segmentator and manual correction

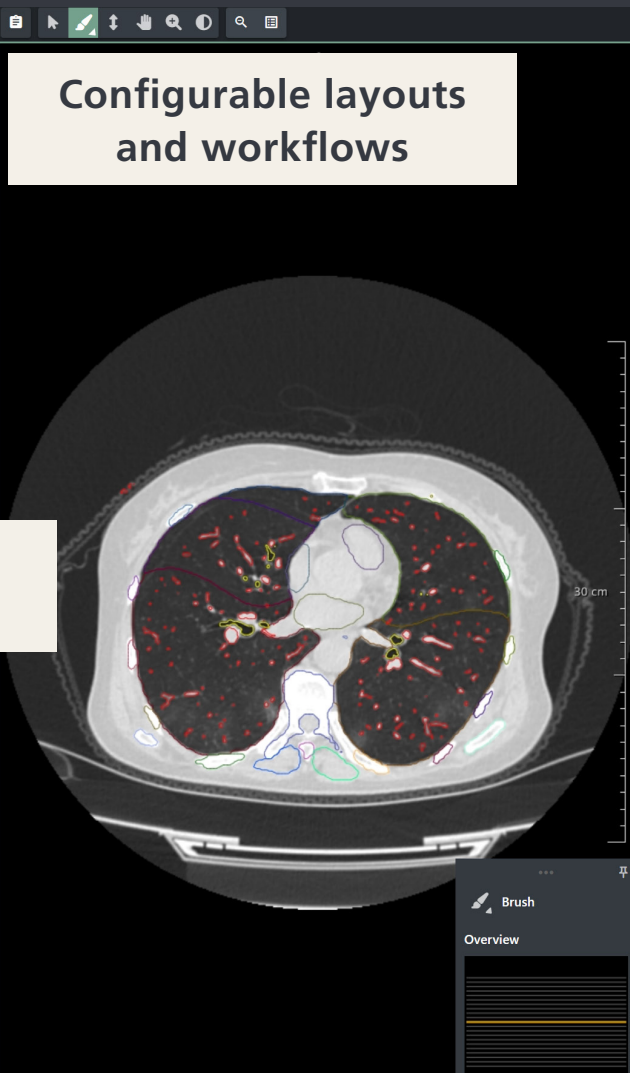
RUN SEGMENTATION...

Export
Export structures

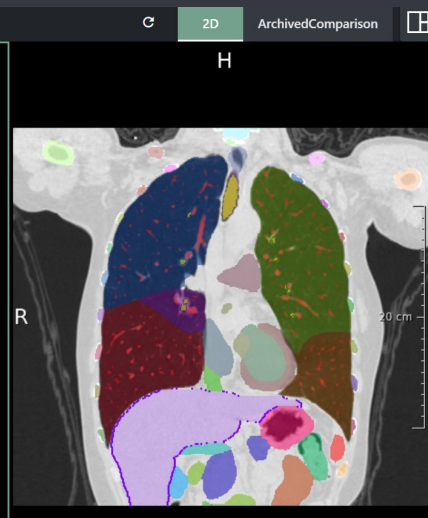
Structures

Segmentations

- Kidney Right
- Kidney Left
- Liver



Configurable layouts and workflows



Integration of AI segmentation models

- 2D ArchivedComparison
- + Add Structure Group
- Segmentations**
- Kidney Right
 - Kidney Left
 - Liver
 - Aorta
 - Ventricle length
 - Heart Atrium Left
 - Heart Atrium Right
 - Heart Myocardium
 - Heart Ventricle Left
 - Heart Ventricle Right
 - Iliac Artery Left
 - Iliac Artery Right
 - Iliac Vena Left
 - Iliac Vena Right
 - Inferior Vena Cava

Liver Is suggested Remove Structure Remove Group

Group Name
Segmentations

Identifier/Type
liver

Title
Liver

Description

Color
7800ff

Max Instances
1

Inline Label Text

Auto Hide Others

Auto Jump To

Jump To Auto Zoom

Jump To Auto Zoom Margin

Representation
Contour

Rating of segmentations

- Heart Ventricle Left
- Heart Ventricle Right
- Inferior Vena Cava
- Portal Vein And Splenic Vein
- Pulmonary Artery
- Colon
- Duodenum
- Esophagus
- Small Bowel
- Stomach
- Autochthon Left
- Autochthon Right
- Iliopsoas Left

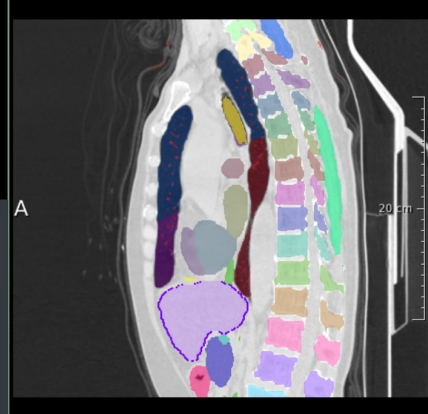
Interactive segmentation tools

Brush

Overview

Current Manual

Interpolated



Visual trial editor

- Small Bowel
- Stomach
- Urinary Bladder
- Autochthon Left
- Autochthon Right
- Gluteus Maximus Left
- Gluteus Maximus Right
- Gluteus Medius Left
- Gluteus Medius Right
- Gluteus Minimus Left
- Gluteus Minimus Right
- Iliopsoas Left
- Iliopsoas Right
- Adrenal Gland Left
- Adrenal Gland Right
- Brain